

Disclaimer

The original, authoritative version of this document is the English version produced by Genevac Ltd. Subsequent changes to any document made by any third party have not been reviewed nor authenticated by Genevac Ltd. Such changes may include, but are not limited to, translation into languages other than English and additions to or deletions from the original content. Genevac Ltd disclaims responsibility for any and all damages, injuries, warranty claims and/or any other claims associated with such changes, inasmuch as such changes result in content that is different from the authoritative Genevac published version of the document.

Table of Contents

Introduction	4	Bottle Holders	28
Nomenclature	4	Flask Holders	29
Sample Holder Compatibility	4	SampleGenie™	31
Sample Holder Types	5	60 ml SampleGenie	32
Heat Transfer	6	60 ml Drying Adapters	33
Heat-transfer Plates for Microplates	6	60 ml Lyophilisation/Concentration Adapters	33
Thermal Cushions	7	125 ml SampleGenie	34
Protective Coatings	7	125 ml Drying Adapters	35
Sample Holders for Special Applications	7	125 ml Lyophilisation/Concentration Adapters	35
Compatibility with other Manufacturers	7	250 ml SampleGenie	36
Minimum Order Quantities	7	250 ml Drying Adapters	37
First-time Use	8	250 ml Lyophilisation/Concentration Adapters	37
Maintenance	8	Miscellaneous	38
Inspection	8	Infinity Trolley	38
Cleaning	8	Heat-Transfer Plates for Microplates	40
Glassware	9	Gilson and Waters Fraction Collection Racks	42
Labelling of Glassware	9	Thermal Cushions	44
Swings	10	Tip Cushions	46
Side-bridge Swing	10	Viton Cushion	46
Fast-Stack Swing - Shallow Well	10	Thermal Cushion Accessories	47
Fast-Stack Swing - Deep Well	10	Spare Parts	48
Sample Holders	11	EZ-2 Consumables	48
Tube holders for Side-bridge Swings	11	HT-Series II SampleGuard Probes	50
One-Piece Tube Holders	16	HT-Series II SampleGuard Probes - HCl Compatible	51
Vial-Holders for Side-Bridge Swings	19	HT-Series 3 Consumables	52
One-Piece Vial Holders	25	HT-Series 3 SampleGuard Probes	53
Centrifuge Tube Holders	26	Genevac Patents	59
Microcentrifuge Tube Holders	27		

Introduction

Genevac sample holders are manufactured from high-grade, solid aluminium to exacting specifications, including precise mass-balancing to ensure smooth operation of the evaporator.

Selection of the correct sample holder is a critical factor in optimising evaporation performance for your selected application. If you have any questions regarding the best sample holder for your application, please contact your local Genevac representative.

Nomenclature

Throughout this brochure, the following terms are used:

Tube Holder: A sample holder that accommodates tubes with rounded ends.

Vial Holder: A sample holder that accommodates vials with flat ends.

Bottle Holder: A sample holder that accommodates bottles with flat ends.

Flask Holder: A sample holder that accommodates round-bottomed flasks.

Sample holders intended for use with tubes with conical or tapered ends are identified individually.

Sample Holder Compatibility

Sample holders within this brochure are intended for use in Genevac HT-Series 3, HT-Series 2 and EZ-2 series centrifugal evaporators. They are not suitable for use in other evaporators or similar products.

Sample holder compatibility is indicated as follows:

Compatibility	
EZ-2	✓
HT-S2	✓
HT-S3	✓

Some sample holders are subject to limitations of use, or require accessories to function. Limitations and/or required accessories will be indicated as follows:

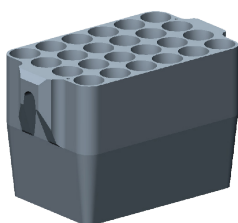
NOTE: Requires Cushion (supplied)

Sample Holder Types

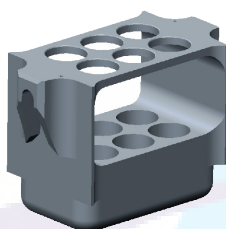
A comprehensive range of sample holders is available to suit tubes, vials, beakers, flasks, microplates etc. Sample holders come in two varieties: one-piece holders, and two-part holders with side-bridge swings.

One-piece Sample Holders

One-piece sample holders are those in which the swing is integral to the holder.



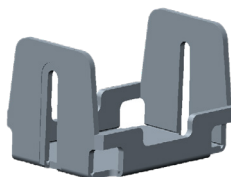
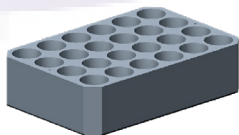
One-piece sample holder



One-piece sample holder with integral top-plate

Two-part Sample Holders

Two-part sample holders are those that consist of a sample holder and separate side-bridge swing.



Separate sample holder and side-bridge swing

All sample-holders are designed to lift cleanly out of the rotor to allow for easy sample loading.

Heat Transfer

A major factor in determining the speed of evaporation is the rate at which heat is transferred into the sample. Greater heat transfer means faster evaporation. In Genevac HT-Series and EZ-2 Series evaporators, heat transfer is optimised via the following methods:

High-quality Aluminium Rotors and Sample Holders

Genevac evaporators use high-quality aluminium, ensuring the highest thermal conductivity. This allows the most efficient heat transfer, at the lowest weight.

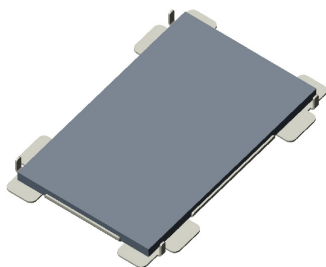
Precision Engineering

Sample holder tube wells must be manufactured to high tolerance to ensure no gaps between the wall and the glassware that would reduce heat transfer or result in breakage. Centre of gravity and mass must be correct to ensure even heat distribution and rotor balance. Precision engineering combines with over two decades of experience to ensure perfect evaporation every time.

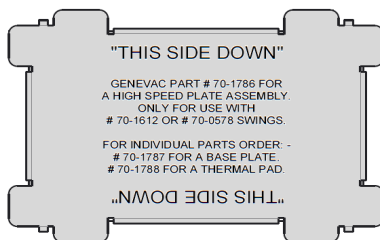
Heat-transfer Plates for Microplates

Heat-transfer plates provide improved evaporation results when using microplates. Improvements will be seen in evenness of sample drying across the plate, and for some applications, heat-transfer plates may help to reduce evaporation times by up to 50%. Improvements are most notable when using deep-well or mid-well plates.

When using heat-transfer plates with pliable thermal pads, the plate should be inserted into the swing with the metal base-plate facing downwards (in contact with the swing). The microplate is loaded onto the top of the pad.



Heat-transfer plate



Heat-transfer pad base-plate

NOTE: Heat-transfer plates are for use with microplates only.

Thermal Cushions & Tip Cushions

Thermal Cushions and Tip Cushions provide improved evaporation results in a similar manner to thermal pads used with heat-transfer plates, and prolong glassware lifetimes by helping to absorb the high centrifugal load applied by Genevac evaporators. Use of thermal or tip cushions is mandatory with some sample holders.

Sample holders that require the use of thermal or tip cushions are supplied with a starter pack of cushions to allow immediate use.

Cushions are consumable items and must be replaced when worn or damaged. Genevac recommends purchasing additional cushions to allow for periodic replacement.

Protective Coatings

Standard aluminium sample holders are hard anodised (water sealed) for protection against all common organic solvents, including strong acids such as TFA, HCl and Thionyl chloride.

NOTE: HCl and Thionyl chloride should only be evaporated in systems that are HCl-compatible. These systems are specifically built to resist attack from HCl and Thionyl chloride.

NOTE: The colouring of the anodised surface finish may vary from batch to batch; this is normal and does not affect the performance of the sample holder.

Sample Holders for Special Applications

As the market leader in centrifugal evaporation, Genevac manufacture sample holders to suit almost every common application. If you have a special application or unusual tube size that is not available in the current range of sample holders, Genevac offers a bespoke sample holder design service. Please contact your local Genevac representative for more information.

Compatibility with other Manufacturers

Please check the Genevac website for guides to compatibility with Radleys and Metler Toledo Autochemistry (Bohdan) products.

Minimum Order Quantities

A minimum order quantity of two applies to sample holders, side-bridge swings, heat-transfer plates and SampleGenie assemblies.

First-time Use

When using sample holders for the first time, always check that they are compatible with the evaporator. Load the sample holders with empty tubes (or vials, plates etc. as appropriate) and place the holder and swing assembly onto the rotor. Swing the rotor by hand, allowing the sample holder to reach its fully horizontal state, to make sure that no part of the assembly touches the rotor or chamber.

Maintenance

Inspect and clean the sample holders on a regular basis, and always following any incident of solvent spillage or glass breakage.

Inspection

Visually inspect the sample holders and swings to check for any spilled solvent or debris, especially in the sample holder wells. Spilled solvent can cause debris to adhere to the sample holders, creating raised points that place additional stress on the glassware.

Superficial surface damage such as scratches do not affect the performance of the sample holder. If deep pits or crevices begin to form, or if there is any structural damage (e.g. bending, deformation), immediately stop using it. Contact the Genevac Service department for evaluation.

Repeated use of sample holders with strong acids may cause colour fading over time. This is normal and does not affect the integrity of the sample holders.

Check the state of all thermal or tip cushions. Replace cushions at the first sign of wear or damage to reduce the risk of glass breakage.

Cleaning

Clean off any adhered dirt or debris by washing the sample holders in soapy water, or with a cleaning solvent such as methanol or acetone. Once washed, rinse the sample holders in clean water. Alternatively, wash in a dishwasher at 90°C. Once washed, inspect the sample holder again to ensure that all adhered dirt, debris and solvent residue is removed.

Always dry the sample holders thoroughly after cleaning. Never place wet sample holders in the evaporator.

NOTE: The most likely cause of glassware breakage is a small fragment of glass from a previous glass breakage which has become stuck in a sample holder well. It is therefore very important that sample holders are cleaned thoroughly after any occurrence of glass breakage.

Glassware

Some Genevac evaporators subject samples to accelerations in excess of 500 times gravity. This allows for excellent evaporation, but places a high degree of stress on the glassware. Selection of suitable glassware is essential to avoid glassware breakage and ensure perfect evaporation.

Always use high-quality glassware from recognised manufacturers of international repute. Experience has shown that 'own-brand' catalogue glassware can have highly variable dimensions and manufacturing quality; this kind of glassware is not recommended for use in Genevac evaporators due to excessive risk of breakage.

When selecting glassware, ensure the following:

- Reputable scientific glassware manufacturer
- High quality, machine-made borosilicate glass
- Minimum 1.2 mm wall thickness

Re-use of glassware in centrifugal evaporators gradually reduces the strength of the glassware. Replace all glassware regularly to avoid breakage.

Damaged Glassware

Even a small scratch can reduce the strength of glassware by a significant degree. **Do not use glassware that is scratched, chipped, cracked or otherwise damaged. Do not use metal spatulas, wire brushes or similar hard instruments to clean glassware or remove dried samples.**

Labelling of Glassware

There are two common methods of labelling glassware in laboratory environments. Both types can cause problems in the evaporator.

Paper/Thin Film Labels

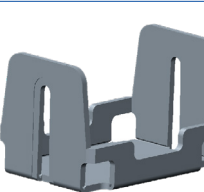
The label effectively increases the diameter of the tube (especially if it wraps around the tube more than once). When the tube is not fully snug in the holder, heat transfer is reduced and any raised points (e.g. tiny fragments of glass from a previous breakage, small lumps of paper towel left behind after cleaning, or the label itself) place additional stress on the glassware.

Ceramic Etched

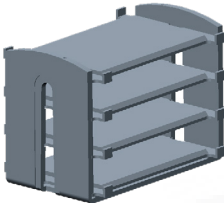
Ceramic-etched labelling weakens the glass. Genevac recommend testing new tubes for breakage before purchasing glassware in bulk.

Swings

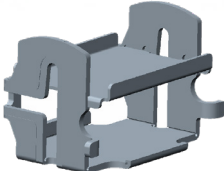
Side-bridge Swing

	Max footprint	129.0 x 87.0 mm	Part Number	
	Mass	380 g	70-0578	
	Details	Suitable for use with all systems including HCl compatible. Holds a range of sample holders.	Compatibility	
			EZ-2	✓
			HT-S2	✓
		HT-S3	✓	

Fast-Stack Swing - Shallow Well

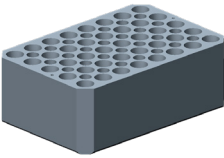
	Max plate height	19 mm	Part Number	
	Max footprint	129.0 x 87.0 mm	70-1338	
	Mass	523 g	Compatibility	
	Details	Suitable for use with all systems including HCl compatible. Holds 4 shallow-well microplates.	EZ-2	✓
			HT-S2	✓
HT-S3			✓	

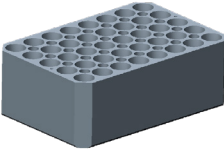
Fast-Stack Swing - Deep Well

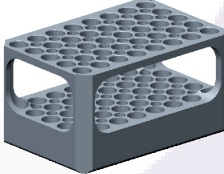
	Max plate height	45 mm	Part Number	
	Max footprint	129.0 x 87.0 mm	70-1612	
	Mass	400 g	Compatibility	
	Details	NOTE: Requires two heat-transfer pads (supplied). Suitable for use with all systems including HCl compatible. Holds 2 deep-well microplates.	EZ-2	✓
			HT-S2	✓
HT-S3			✓	

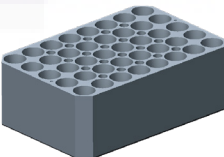
Sample Holders

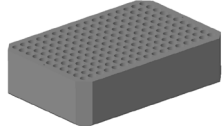
Tube holders for Side-bridge Swings

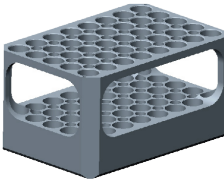
	Tube Dimensions (mm)	Diameter	Length	Part Number	
	Nominal	10	75	10-5000	
	Limits	9.8 to 10.3	55 to 75	Compatibility	
	Details	Holds up to 40 tubes.		EZ-2	✓
				HT-S2	✓
				HT-S3	✓

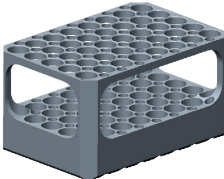
	Tube Dimensions (mm)	Diameter	Length	Part Number	
	Nominal	12	75	10-5025	
	Limits	11.8 to 12.3	55 to 75	Compatibility	
	Details	Holds up to 40 tubes.		EZ-2	✓
				HT-S2	✓
				HT-S3	✓

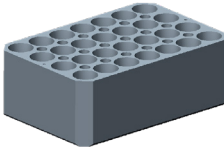
	Tube Dimensions (mm)	Diameter	Length	Part Number	
	Nominal	12	100	10-5001	
	Limits	11.8 to 12.3	75 to 102	Compatibility	
	Details	Holds up to 40 tubes.		EZ-2	✓
				HT-S2	✓
				HT-S3	✓

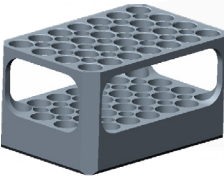
	Tube Dimensions (mm)	Diameter	Length	Part Number	
	Nominal	13	75	10-5047	
	Limits	12.8 to 13.3	55 to 75	Compatibility	
	Details	Holds up to 40 tubes.		EZ-2	✓
				HT-S2	✓
				HT-S3	✓

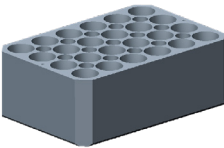
	Tube Dimensions (mm)	Diameter	Length	Part Number	
	Nominal	6	51	10-5086	
	Limits	5.5 to 6.3	35 to 75	Compatibility	
	Details	Holds up to 187 tubes.		EZ-2	✓
				HT-S2	✓
				HT-S3	✓

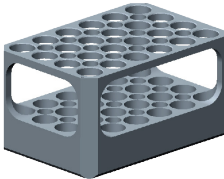
	Tube Dimensions (mm)	Diameter	Length	Part Number	
	Nominal	13	100	10-5002	
	Limits	12.8 to 13.3	75 to 102	Compatibility	
	Details	Holds up to 40 tubes.		EZ-2	✓
				HT-S2	✓
				HT-S3	✓

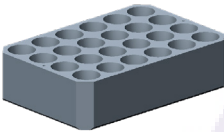
	Tube Dimensions (mm)	Diameter	Length	Part Number	
	Nominal	13.5	100	10-5003	
	Limits	13.3 to 13.8	75 to 102	Compatibility	
	Details	Holds up to 40 tubes.		EZ-2	✓
				HT-S2	✓
				HT-S3	✓

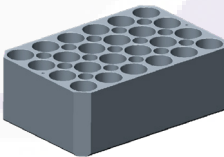
	Tube Dimensions (mm)	Diameter	Length	Part Number	
	Nominal	15	75	10-5046	
	Limits	14.8 to 15.3	55 to 75	Compatibility	
	Details	Holds up to 28 tubes.		EZ-2	✓
				HT-S2	✓
				HT-S3	✓

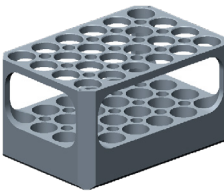
	Tube Dimensions (mm)	Diameter	Length	Part Number	
	Nominal	15	100	10-5008	
	Limits	14.8 to 15.3	75 to 102	Compatibility	
	Details	Holds up to 28 tubes.		EZ-2	✓
				HT-S2	✓
				HT-S3	✓

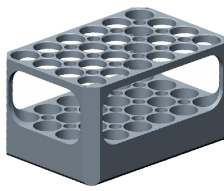
	Tube Dimensions (mm)	Diameter	Length	Part Number	
	Nominal	16	75	10-5048	
	Limits	15.8 to 16.3	55 to 75	Compatibility	
	Details	Holds up to 24 tubes.		EZ-2	✓
				HT-S2	✓
				HT-S3	✓

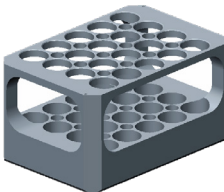
	Tube Dimensions (mm)	Diameter	Length	Part Number	
	Nominal	16	100	10-5004	
	Limits	15.8 to 16.3	75 to 102	Compatibility	
	Details	Holds up to 24 tubes.		EZ-2	✓
				HT-S2	✓
				HT-S3	✓

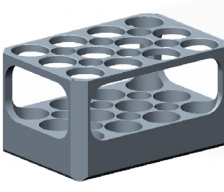
	Tube Dimensions (mm)	Diameter	Length	Part Number	
	Nominal	16.5	50	10-5069	
	Limits	16.3 to 16.8	40 to 60	Compatibility	
	Details	Holds up to 24 tubes.		EZ-2	✓
				HT-S2	✓
				HT-S3	✓

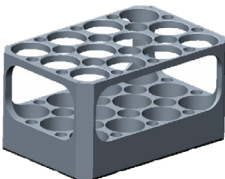
	Tube Dimensions (mm)	Diameter	Length	Part Number	
	Nominal	17	83	10-5042	
	Limits	16.3 to 17.3	75 to 90	Compatibility	
	Details	For tapered microwave tubes. Holds up to 24 tubes.		EZ-2	✓
				HT-S2	✓
				HT-S3	✓

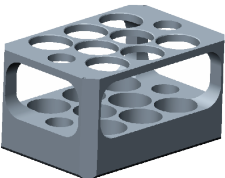
	Tube Dimensions (mm)	Diameter	Length	Part Number	
	Nominal	17	100	10-5005	
	Limits	16.8 to 17.3	75 to 102	Compatibility	
	Details	Holds up to 24 tubes.		EZ-2	✓
				HT-S2	✓
				HT-S3	✓

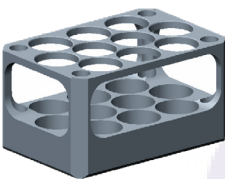
	Tube Dimensions (mm)	Diameter	Length	Part Number	
	Nominal	18	100	10-5006	
	Limits	17.8 to 18.3	75 to 102	Compatibility	
	Details	Holds up to 24 tubes.		EZ-2	✓
				HT-S2	✓
				HT-S3	✓

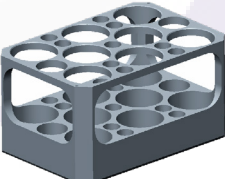
	Tube Dimensions (mm)	Diameter	Length	Part Number	
	Nominal	18	105	10-5073	
	Limits	17.8 to 18.3	75 to 110	Compatibility	
	Details	Holds up to 20 tubes.		EZ-2	✓
				HT-S2	✓
				HT-S3	✓

	Tube Dimensions (mm)	Diameter	Length	Part Number	
	Nominal	24	100	10-5044	
	Limits	23.8 to 24.3	75 to 102	Compatibility	
	Details	Holds up to 12 tubes.		EZ-2	✓
				HT-S2	✓
				HT-S3	✓

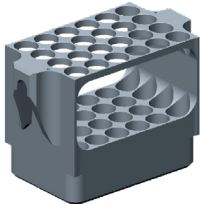
	Tube Dimensions (mm)	Diameter	Length	Part Number
	Nominal	25	100	10-5009
	Limits	24.8 to 25.3	75 to 102	Compatibility
	Details	Holds up to 12 tubes.	EZ-2	✓
			HT-S2	✓
			HT-S3	✓

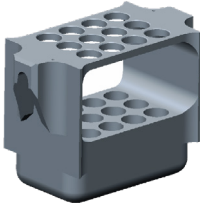
	Tube Dimensions (mm)	Diameter	Length	Part Number
	Nominal	27.5	100	10-5012
	Limits	27.3 to 27.8	75 to 110	Compatibility
	Details	Holds up to 8 tubes.	EZ-2	✓
			HT-S2	✓
HT-S3			✓	


	Tube Dimensions (mm)	Diameter	Length	Part Number
	Nominal	28	100	10-5071
	Limits	27.8 to 28.3	75 to 110	Compatibility
	Details	Holds up to 10 tubes.	EZ-2	✓
			HT-S2	✓
			HT-S3	✓


	Tube Dimensions (mm)	Diameter	Length	Part Number
	Nominal	30	100	10-5018
	Limits	29.8 to 30.3	75 to 102	Compatibility
	Details	Holds up to 8 tubes.	EZ-2	✓
			HT-S2	✓
HT-S3			✓	

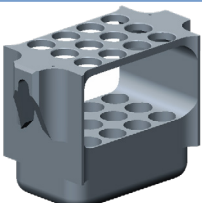
One-Piece Tube Holders


	Tube Dimensions (mm)	Diameter	Length	Part Number	
	Nominal	16	125	10-5070	
	Limits	15.8 to 16.3	110 to 132	Compatibility	
	Details	Holds up to 24 tubes.		EZ-2	✓
				HT-S2	✓
				HT-S3	✓


	Tube Dimensions (mm)	Diameter	Length	Part Number	
	Nominal	16	150	10-5020	
	Limits	15.8 to 16.3	110 to 152	Compatibility	
	Details	Holds up to 12 tubes.		EZ-2	✓
				HT-S2	✓
				HT-S3	✓

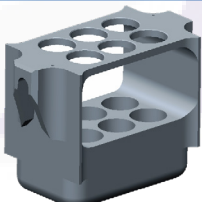
	Tube Dimensions (mm)	Diameter	Length	Part Number	
	Nominal	16.5	125	10-5050	
	Limits	16.3 to 16.8	110 to 132	Compatibility	
	Details	Holds up to 20 tubes.		EZ-2	✓
				HT-S2	✓
				HT-S3	✓

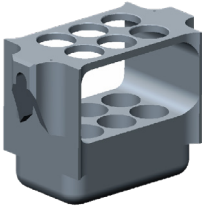
	Tube Dimensions (mm)	Diameter	Length	Part Number	
	Nominal	17	150	10-5022	
	Limits	16.8 to 17.3	110 to 152	Compatibility	
	Details	Holds up to 24 tubes.		EZ-2	✓
				HT-S2	✓
				HT-S3	✓

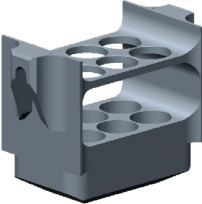
	Dimensions (mm)	Diameter	Length	Part Number	
	Nominal	17.5	140	10-5055	
	Limits	17.0 to 17.8	105 to 142	Compatibility	
	Details	Holds up to 12 tubes.		EZ-2	✓
				HT-S2	✓
				HT-S3	✓

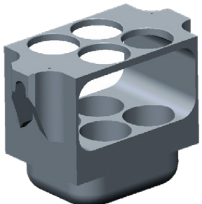
	Tube Dimensions (mm)	Diameter	Length	Part Number	
	Nominal	18	150	10-5015	
	Limits	17.8 to 18.3	110 to 152	Compatibility	
	Details	Holds up to 12 tubes.		EZ-2	✓
				HT-S2	✓
				HT-S3	✓

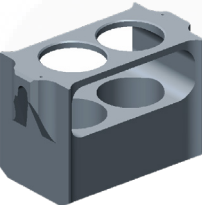
	Tube Dimensions (mm)	Diameter	Length	Part Number	
	Nominal	20	150	10-5023	
	Limits	19.8 to 20.3	110 to 152	Compatibility	
	Details	Holds up to 10 tubes.		EZ-2	✓
				HT-S2	✓
				HT-S3	✓

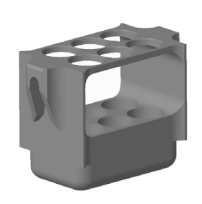
	Tube Dimensions (mm)	Diameter	Length	Part Number	
	Nominal	24	150	10-5026	
	Limits	23.8 to 24.3	110 to 152	Compatibility	
	Details	Compatible with Radleys Carousel and STEM reaction stations. Holds up to 6 tubes.		EZ-2	✓
				HT-S2	✓
				HT-S3	✓

	Tube Dimensions (mm)	Diameter	Length	Part Number	
	Nominal	25	150	10-5027	
	Limits	24.8 to 25.3	110 to 152	Compatibility	
	Details	Holds up to 6 tubes.		EZ-2	✓
				HT-S2	✓
				HT-S3	✓

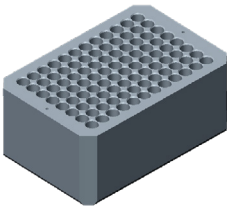
	Tube Dimensions (mm)	Diameter	Length	Part Number	
	Nominal	26	150	10-5066	
	Limits	25.8 to 26.3	102 to 155	Compatibility	
	Details	Holds up to 6 tubes.		EZ-2	✓
				HT-S2	✓
				HT-S3	✓

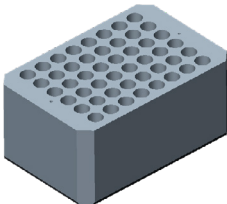
	Tube Dimensions (mm)	Diameter	Length	Part Number	
	Nominal	34	150	10-5056	
	Limits	33.8 to 34.3	110 to 152	Compatibility	
	Details	NOTE: Requires Cushion (supplied). Holds up to 4 tubes. Replacement cushion 10-1546 (each), 10-1551 (pack of 100).		EZ-2	✓
				HT-S2	✓
				HT-S3	✓

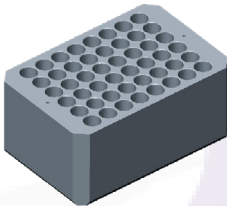
	Tube Dimensions (mm)	Diameter	Length	Part Number	
	Nominal	45	150	10-5064	
	Limits	44.8 to 45.8	110 to 152	Compatibility	
	Details	Holds up to 2 tubes.		EZ-2	✓
				HT-S2	✓
				HT-S3	✓

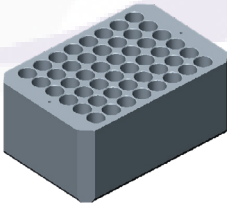
	Tube Dimensions (mm)	Diameter	Length	Part Number	
	Nominal	27.5	140	10-5084	
	Limits	27.3 to 27.8	110 to 145	Compatibility	
	Details	Holds up to 6 tubes.		EZ-2	✓
				HT-S2	✓
				HT-S3	✓

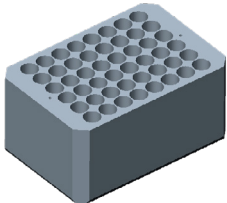
Vial-Holders for Side-Bridge Swings

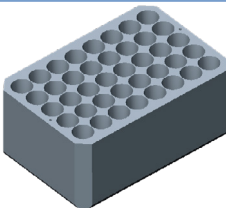
	Vial Dimensions (mm)	Diameter	Length	Part Number
	Nominal	8	35	10-5045
	Limits	7.5 to 8.3	30 to 40	Compatibility
	Details	Holds up to 96 vials.		EZ-2 ✓
				HT-S2 ✓
				HT-S3 ✓

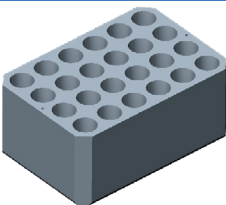
	Vial Dimensions (mm)	Diameter	Length	Part Number
	Nominal	10	45	10-5029
	Limits	9.5 to 10.3	35 to 45	Compatibility
	Details	Holds up to 48 vials.		EZ-2 ✓
				HT-S2 ✓
				HT-S3 ✓

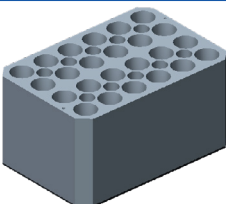
	Vial Dimensions (mm)	Diameter	Length	Part Number
	Nominal	11	35	10-5032
	Limits	10.7 to 11.5	30 to 40	Compatibility
	Details	Holds up to 48 vials.		EZ-2 ✓
				HT-S2 ✓
				HT-S3 ✓

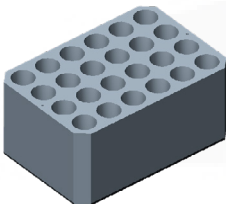
	Vial Dimensions (mm)	Diameter	Length	Part Number
	Nominal	11.5	55	10-5074
	Limits	11.0 to 11.8	40 to 60	Compatibility
	Details	Holds up to 48 vials.		EZ-2 ✓
				HT-S2 ✓
				HT-S3 ✓

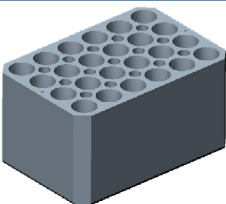
	Vial Dimensions (mm)	Diameter	Length	Part Number
	Nominal	12	35	10-5024
	Limits	11.3 to 12.1	30 to 40	Compatibility
	Details	Including GC auto-sampler vials. Holds up to 48 vials.		EZ-2 ✓
				HT-S2 ✓
				HT-S3 ✓

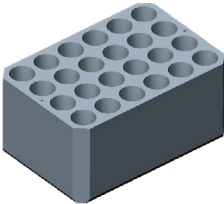
	Vial Dimensions (mm)	Diameter	Length	Part Number
	Nominal	13	50	10-5034
	Limits	12.5 to 13.3	30 to 50	Compatibility
	Details	Holds up to 40 vials.	EZ-2	✓
			HT-S2	✓
			HT-S3	✓

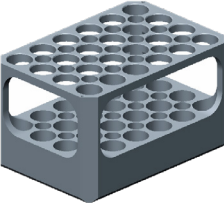
	Vial Dimensions (mm)	Diameter	Length	Part Number
	Nominal	14.5	45	10-5035
	Limits	14.0 to 14.8	35 to 50	Compatibility
	Details	Holds up to 24 vials.	EZ-2	✓
			HT-S2	✓
			HT-S3	✓

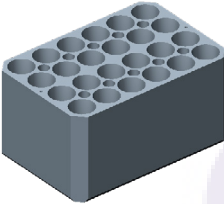
	Vial Dimensions (mm)	Diameter	Length	Part Number
	Nominal	14.5	65	10-5016
	Limits	14.0 to 14.8	55 to 75	Compatibility
	Details	Holds up to 24 vials.	EZ-2	✓
			HT-S2	✓
			HT-S3	✓

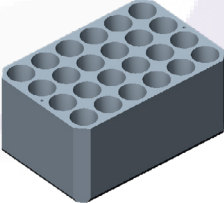
	Vial Dimensions (mm)	Diameter	Length	Part Number
	Nominal	15	45	10-5037
	Limits	14.3 to 15.1	35 to 50	Compatibility
	Details	Holds up to 24 vials.	EZ-2	✓
			HT-S2	✓
			HT-S3	✓

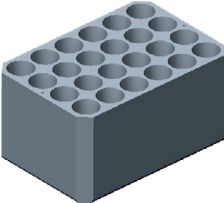
	Vial Dimensions (mm)	Diameter	Length	Part Number
	Nominal	15	65	10-5021
	Limits	14.3 to 15.1	55 to 75	Compatibility
	Details	Holds up to 24 vials.	EZ-2	✓
			HT-S2	✓
			HT-S3	✓

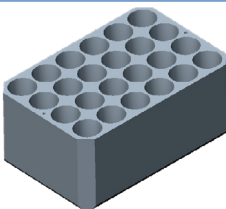
	Vial Dimensions (mm)	Diameter	Length	Part Number	
	Nominal	15.5	45	10-5038	
	Limits	15.0 to 15.8	35 to 50	Compatibility	
	Details	Holds up to 24 vials.		EZ-2	✓
				HT-S2	✓
				HT-S3	✓

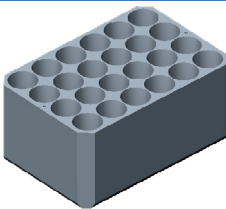
	Vial Dimensions (mm)	Diameter	Length	Part Number	
	Nominal	16	100	10-5067	
	Limits	15.5 to 16.3	75 to 102	Compatibility	
	Details	Holds up to 24 vials.		EZ-2	✓
				HT-S2	✓
				HT-S3	✓

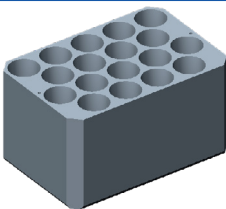
	Vial Dimensions (mm)	Diameter	Length	Part Number	
	Nominal	16.5	65	10-5028	
	Limits	16.2 to 17.0	55 to 75	Compatibility	
	Details	Holds up to 24 vials.		EZ-2	✓
				HT-S2	✓
				HT-S3	✓

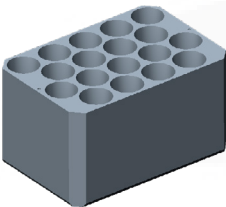
	Vial Dimensions (mm)	Diameter	Length	Part Number	
	Nominal	17	40	10-5007	
	Limits	16.3 to 17.1	38 to 50	Compatibility	
	Details	Holds up to 24 vials.		EZ-2	✓
				HT-S2	✓
				HT-S3	✓

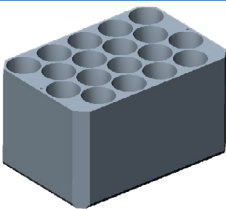
	Vial Dimensions (mm)	Diameter	Length	Part Number	
	Nominal	17	65	10-5030	
	Limits	16.5 to 17.3	55 to 75	Compatibility	
	Details	Including 2 dram vial. Holds up to 24 vials.		EZ-2	✓
				HT-S2	✓
				HT-S3	✓

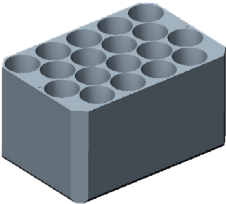
	Vial Dimensions (mm)	Diameter	Length	Part Number	
	Nominal	17.5	45	10-5031	
	Limits	17.0 to 17.8	40 to 50	Compatibility	
	Details	Holds up to 24 vials.		EZ-2	✓
				HT-S2	✓
				HT-S3	✓

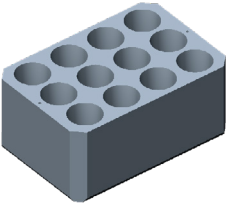
	Vial Dimensions (mm)	Diameter	Length	Part Number	
	Nominal	18	45	10-5033	
	Limits	17.7 to 18.5	40 to 50	Compatibility	
	Details	Holds up to 24 vials.		EZ-2	✓
				HT-S2	✓
				HT-S3	✓

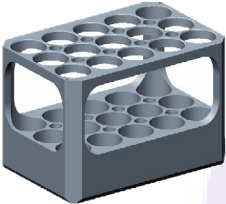
	Vial Dimensions (mm)	Diameter	Length	Part Number	
	Nominal	20	65	10-5036	
	Limits	19.5 to 20.3	55 to 75	Compatibility	
	Details	Holds up to 18 vials.		EZ-2	✓
				HT-S2	✓
				HT-S3	✓

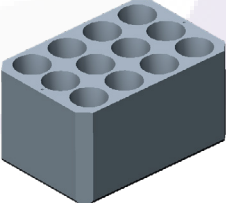
	Vial Dimensions (mm)	Diameter	Length	Part Number	
	Nominal	20.5	65	10-5040	
	Limits	20.0 to 20.8	55 to 75	Compatibility	
	Details	Holds up to 18 vials.		EZ-2	✓
				HT-S2	✓
				HT-S3	✓

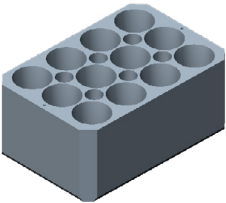
	Vial Dimensions (mm)	Diameter	Length	Part Number	
	Nominal	21	65	10-5039	
	Limits	20.5 to 21.3	55 to 75	Compatibility	
	Details	Holds up to 18 vials.		EZ-2	✓
				HT-S2	✓
				HT-S3	✓

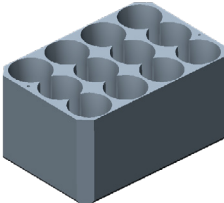
	Vial Dimensions (mm)	Diameter	Length	Part Number	
	Nominal	21.5	65	10-5041	
	Limits	21.0 to 21.8	55 to 75	Compatibility	
	Details	Holds up to 18 vials.		EZ-2	✓
				HT-S2	✓
				HT-S3	✓

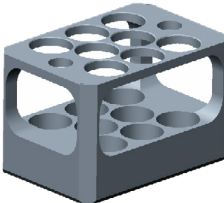
	Vial Dimensions (mm)	Diameter	Length	Part Number	
	Nominal	22.5	50	10-5062	
	Limits	22.0 to 22.8	38 to 50	Compatibility	
	Details	Holds up to 12 vials.		EZ-2	✓
				HT-S2	✓
				HT-S3	✓

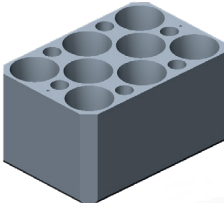
	Vial Dimensions (mm)	Diameter	Length	Part Number	
	Nominal	23	85	10-5079	
	Limits	22.5 to 23.3	75 to 102	Compatibility	
	Details	Holds up to 15 vials.		EZ-2	✓
				HT-S2	✓
				HT-S3	✓

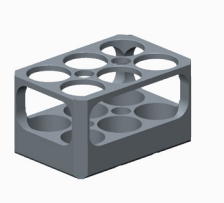
	Vial Dimensions (mm)	Diameter	Length	Part Number	
	Nominal	23.5	65	10-5019	
	Limits	23.0 to 23.8	55 to 75	Compatibility	
	Details	Holds up to 12 vials.		EZ-2	✓
				HT-S2	✓
				HT-S3	✓

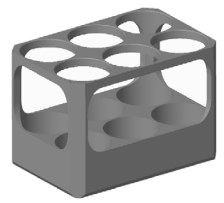
	Vial Dimensions (mm)	Diameter	Length	Part Number	
	Nominal	24	45	10-5075	
	Limits	23.7 to 24.5	45 to 75	Compatibility	
	Details	Holds up to 12 vials.		EZ-2	✓
				HT-S2	✓
				HT-S3	✓

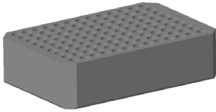
	Vial Dimensions (mm)	Diameter	Length	Part Number
	Nominal	27.5	65	10-5013
	Limits	27.0 to 27.8	55 to 75	Compatibility
	Details	Accepts 20 ml scintillation vials. Holds up to 12 vials.	EZ-2	✓
			HT-S2	✓
			HT-S3	✓

	Vial Dimensions (mm)	Diameter	Length	Part Number
	Nominal	27.5	100	10-5010
	Limits	27.0 to 27.8	75 to 110	Compatibility
	Details	NOTE: Requires Cushion (supplied). Accepts 40 ml scintillation vials. Holds up to 8 vials. Replacement cushion 10-1546 (each), 10-1551 (pack of 100).	EZ-2	✓
			HT-S2	✓
			HT-S3	✓

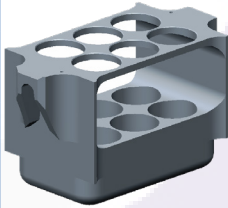
	Vial Dimensions (mm)	Diameter	Length	Part Number
	Nominal	30	65	10-5078
	Limits	29.5 to 30.3	55 to 75	Compatibility
	Details	Holds up to 8 vials.	EZ-2	✓
			HT-S2	✓
			HT-S3	✓

	Vial Dimensions (mm)	Diameter	Length	Part Number
	Nominal	35	100	10-5068
	Limits	34.5 to 35.8	75 to 102	Compatibility
	Details	Holds up to 6 vials.	EZ-2	✓
			HT-S2	✓
			HT-S3	✓

	Vial Dimensions (mm)	Diameter	Length	Part Number
	Nominal	40	75	10-5085
	Limits	39.5 to 40.4	72 to 80	Compatibility
	Details	Holds up to 6 vials.	EZ-2	✓
			HT-S2	✓
			HT-S3	✓

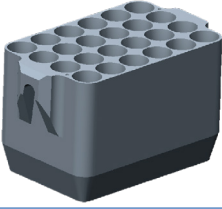
	Vial Dimensions (mm)	Diameter	Length	Part Number	
	Nominal	7	32	10-5087	
	Limits	6.5 to 7.5	22 to 42	Compatibility	
	Details	Holds up to 117 vials.		EZ-2	✓
				HT-S2	✓
				HT-S3	✓

One-Piece Vial Holders

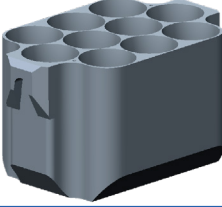
	Vial Dimensions (mm)	Diameter	Length	Part Number	
	Nominal	27.5	140	10-5076	
	Limits	27.0 to 27.8	105 to 142	Compatibility	
	Details	NOTE: Requires thermal cushion (10-1546). For Dionex 60 ml ASE® tubes. Holds up to 6 vials. Replacement cushion 10-1546 (each), 10-1551 (pack of 100).		EZ-2	✓
				HT-S2	✓
				HT-S3	✓

ASE® is a registered trademark of Dionex Corporation.

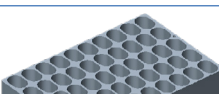
Centrifuge Tube Holders

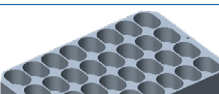
	Tube Dimensions (mm)	Diameter	Length	Part Number	
	Nominal	16.5	115	70-1192	
	Limits	16.3 to 17.3	100 to 120	Compatibility	
	Details	NOTE: Requires tip cushion (supplied), Holds up to 24 tubes. Replaces 10-5053.		EZ-2	✓
				HT-S2	✓
				HT-S3	✓

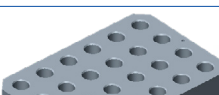
For 30° ended 15 ml centrifuge tubes.
 Replacement cushion 10-1585 (each), 10-1602 (pack of 24).

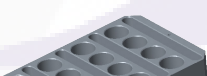
	Tube Dimensions (mm)	Diameter	Length	Part Number	
	Nominal	29.5	115	10-5054	
	Limits	28.5 to 29.8	100 to 115	Compatibility	
	Details	For 70° ended 50 ml centrifuge tubes. Holds up to 10 tubes.		EZ-2	✓
				HT-S2	✓
				HT-S3	✓

Microcentrifuge Tube Holders

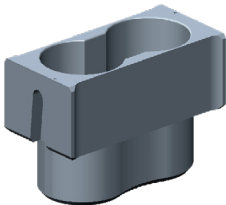
	Tube Dimensions (mm)	Diameter	Length	Part Number		
	Nominal	8	30	10-5049		
	Limits	NA	NA	Compatibility		
	Details	For 0.5 ml flip-cap, without skirt. Holds up to 50 tubes.			EZ-2	✓
					HT-S2	✓
HT-S3					✓	

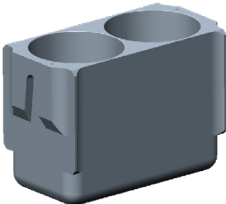
	Tube Dimensions (mm)	Diameter	Length	Part Number		
	Nominal	10	40	10-5043		
	Limits	NA	NA	Compatibility		
	Details	For 1.5 ml flip-cap, without skirt. Holds up to 32 tubes.			EZ-2	✓
					HT-S2	✓
HT-S3					✓	

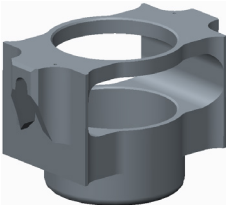
	Tube Dimensions (mm)	Diameter	Length	Part Number		
	Nominal	8	30	10-5011		
	Limits	NA	NA	Compatibility		
	Details	For 2.0 ml flip-cap, without skirt. Holds up to 24 tubes.			EZ-2	✓
					HT-S2	✓
HT-S3					✓	

	Tube Dimensions (mm)	Diameter	Length	Part Number		
	Nominal	17	40	10-5089		
	Limits	NA	NA	Compatibility		
	Details	For 5.0 ml flip-cap, without skirt. Holds up to 16 tubes.			EZ-2	✓
					HT-S2	✓
HT-S3					✓	

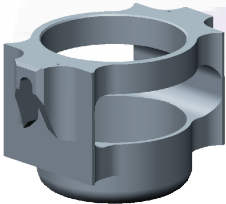
Bottle Holders

	Bottle Dimensions (mm)	Diameter	Length	Part Number	
	Nominal	55.5	100	70-1025	
	Limits	54.0 to 56.0	90 to 110	Compatibility	
	Details	Including Schott 100 ml. Holds 2 bottles.		EZ-2	✓
				HT-S2	✓
				HT-S3	✓

	Bottle Dimensions (mm)	Diameter	Length	Part Number	
	Nominal	60.5	125	10-5061	
	Limits	59.5 to 62	105 to 127	Compatibility	
	Details	Holds 2 bottles.		EZ-2	✓
				HT-S2	✓
				HT-S3	✓

	Bottle Dimensions (mm)	Diameter	Length	Part Number	
	Nominal	70	140	70-1795	
	Limits	69 to 70.8	110 to 140	Compatibility	
	Details	NOTE: Requires cushion (supplied). Replacement cushion: 04-8963.		EZ-2	✓
				HT-S2	✓
				HT-S3	✓

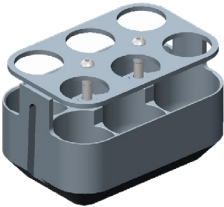
Including Schott 250ml & 400ml beaker.

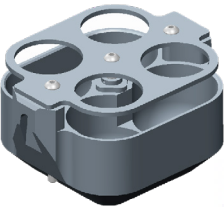
	Bottle Dimensions (mm)	Diameter	Length	Part Number	
	Nominal	82	152	10-5063	
	Limits	81 to 82.8	110 to 152	Compatibility	
	Details	NOTE: Not for use with EZ-2 Mark 1 models. Requires cushion (supplied).		EZ-2	✓
				HT-S2	✓
				HT-S3	✓

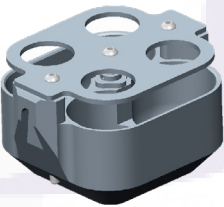
For 500 ml bottle. Holds one bottle.
Replacement cushion 10-1543 (each), 10-1553 (pack of 100).

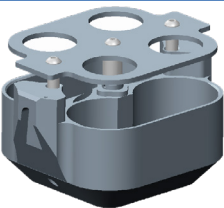
Flask Holders


Flask socket sizes are European ISO-standard joint sizes. The first number represents the outer diameter at the widest part of the ground glass joint section in millimetres. The second number represents the length of the joint section in millimetres.


	Flask Volume	25 ml	Part Number	
	Socket Size	19/26 to 24/29	70-0538	
	Details	NOTE: Requires cushion (supplied). Holds 6 flasks. Replacement cushion 10-1546 (each), 10-1551 (pack of 100).	Compatibility	
			EZ-2	✓
			HT-S2	✓
			HT-S3	✓

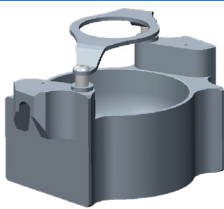
	Flask Volume	50 ml	Part Number	
	Socket Size	29/32	70-0539	
	Details	NOTE: Requires cushion (supplied). Holds 4 flasks. Replacement cushion 10-1540 (each), 10-1556 (pack of 100).	Compatibility	
			EZ-2	✓
			HT-S2	✓
			HT-S3	✓

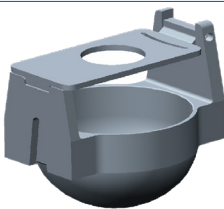
	Flask Volume	50 ml	Part Number	
	Socket Size	19/36 to 24/29	70-0656	
	Details	NOTE: Requires cushion (supplied). Holds 4 flasks. Replacement cushion 10-1540 (each), 10-1556 (pack of 100).	Compatibility	
			EZ-2	✓
			HT-S2	✓
			HT-S3	✓

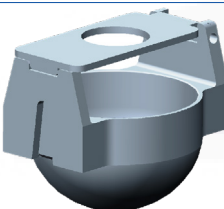
	Flask Volume	50 ml	Part Number	
	Socket Size	24/29 to 29/32	70-1026	
	Details	NOTE: Requires cushion (supplied). Holds 4 flasks. Replacement cushion 10-1540 (each), 10-1556 (pack of 100).	Compatibility	
			EZ-2	✓
			HT-S2	✓
			HT-S3	✓

	Flask Volume	100 ml	Part Number	
	Socket Size	19/26 to 24/29	70-0657	
	Details	NOTE: Requires cushion (supplied). Compatible with Radleys 6-piece Carousel. Holds 3 flasks. Replacement cushion 10-1541 (each), 10-1555 (pack of 48).	Compatibility	
			EZ-2	✓
			HT-S2	✗
			HT-S3	✗

	Flask Volume	100 ml	Part Number	
	Socket Size	29/36 to 19/32	70-0579	
	Details	NOTE: Requires cushion (supplied). Holds 3 flasks. Replacement cushion 10-1541 (each), 10-1555 (pack of 48).	Compatibility	
			EZ-2	✓
			HT-S2	✗
			HT-S3	✗

	Flask Volume	250 ml	Part Number	
	Socket Size	19/22 to 29/32	70-0580	
	Details	NOTE: Requires cushion (supplied). Compatible with Radleys 6-piece Carousel. Holds 1 flask. Replacement cushion 10-1543 (each), 10-1553 (pack of 12).	Compatibility	
			EZ-2	✓
			HT-S2	✓
			HT-S3	✓

	Flask Volume	500 ml	Part Number	
	Socket Size	19/32 to 29/32	70-0582	
	Details	NOTE: Requires cushion (supplied). Holds 1 flask. Replacement cushion 10-1544 (each), 10-1552 (pack of 12).	Compatibility	
			EZ-2	✓
			HT-S2	✗
			HT-S3	✗

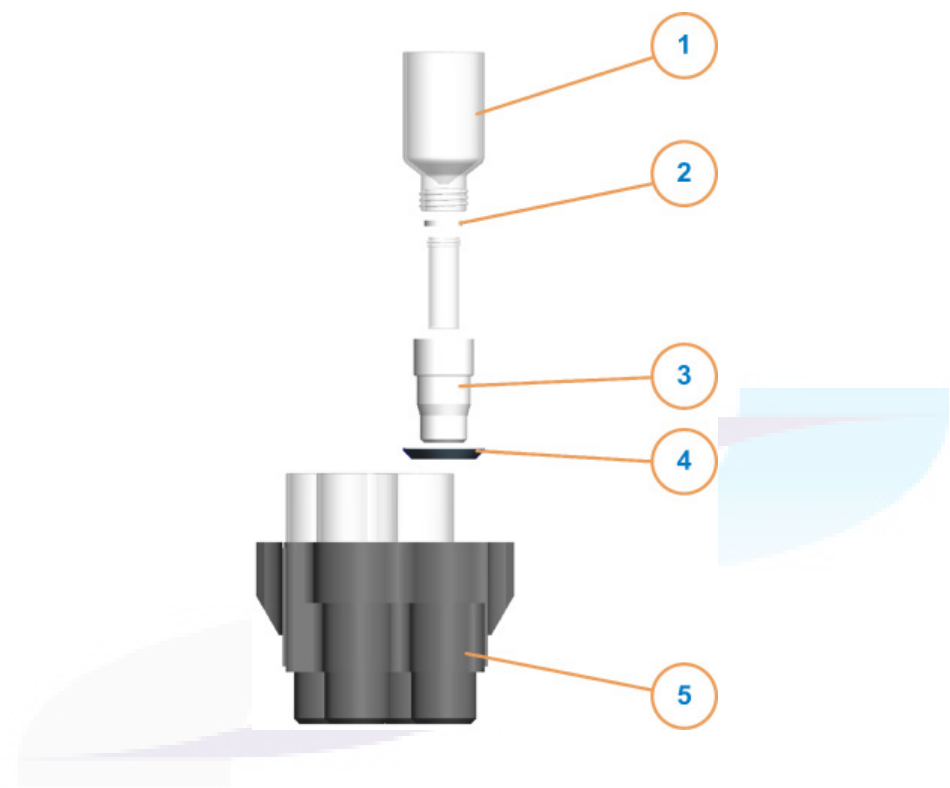
	Flask Volume	500 ml	Part Number	
	Socket Size	19/32 to 29/32	10-1616	
	Details	NOTE: Requires cushion (supplied). Max. flask height: 156mm. Holds 1 flask. Replacement cushion 10-1544 (each), 10-1552 (pack of 12).	Compatibility	
			EZ-2	✗
			HT-S2	✓
			HT-S3	✓

SampleGenie™

The revolutionary SampleGenie technology enables large volume samples to be dried or concentrated directly into a variety of small vials. Where HPLC purification fractions are used, fractions are combined into one tube and dried or fast lyophilised into the final vial.



60 ml SampleGenie



Item	Description	Qty in Set	Part Number
1	Flask	10	70-1153
2	Seal for GC vials - white Viton	▪	70-1359
	Seal for GC vials - perfluoroelastomer	▪	70-1360
	Seal for all vials except GC - white Viton	▪	70-1361
	Seal for all vials except GC - perfluoroelastomer	▪	70-1362
3	Adapter	▪	▪ ▪
4	Cushion for 60 ml SampleGenie - Viton	10	70-1448
5	Sample Holder:		
	SampleGenie set with white Viton seals	1	70-1340
	SampleGenie set with perfluoroelastomer seals	1	70-1341

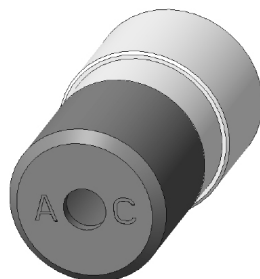
▪ Specify quantity when ordering

▪ ▪ Refer to following table for 60 ml adapter part numbers

Please specify adapter type when ordering complete assemblies.

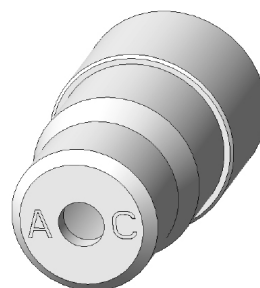
60 ml Drying Adapters

Code	Max. Vial Diameter (mm)	Vial Length (mm)	Part Number
AE	11.8	30.5 to 33.5	04-6214
AG	11.8	45.5 to 48.5	04-6615
AD	13.5	38.5 to 41.5	04-6174
AL	15.3	30.5 to 33.5	04-7593
AB	15.3	43.5 to 46.5	04-6155
AF	15.3	48.5 to 51.5	04-4686
AK	15.6	38.5 to 41.5	04-7302
AM	16.6	48.5 to 51.5	15-0448
AJ	16.8	43.5 to 46.5	04-6756
AA	17.3	48.5 to 51.5	04-6156
AH	19.8	38.5 to 41.5	04-6619
AC	20.3	48.5 to 51.1	04-6166



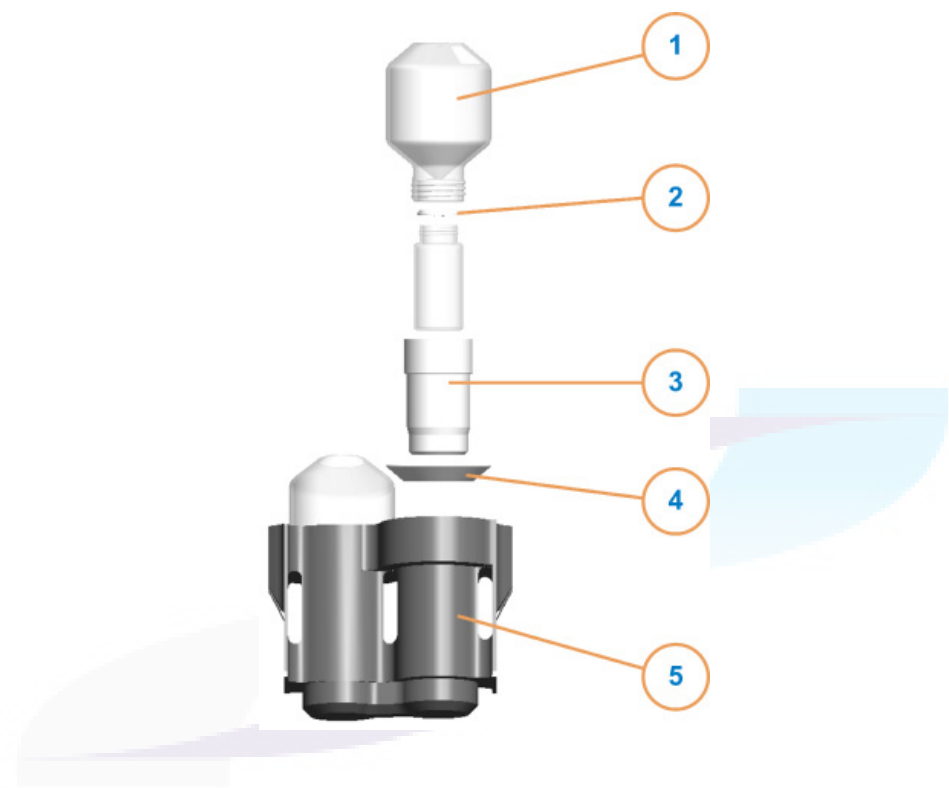
60 ml Lyophilisation/Concentration Adapters

Code	Max. Vial Diameter (mm)	Vial Length (mm)	Part Number
AE	11.8	30.5 to 33.5	04-6215
AG	11.8	45.5 to 48.5	04-6614
AD	13.5	38.5 to 41.5	04-6175
AL	15.3	30.5 to 33.5	04-7592
AB	15.3	43.5 to 46.5	04-6130
AF	15.3	48.5 to 51.5	04-4688
AK	15.6	38.5 to 41.5	04-7301
AM	16.6	48.5 to 51.5	15-0450
AJ	16.8	43.5 to 46.5	04-6757
AA	17.3	48.5 to 51.5	04-6110
AH	19.8	38.5 to 41.5	04-6618
AC	20.3	48.5 to 51.1	04-6167



NOTE: Code is shown on the base of the adaptor.

125 ml SampleGenie



Item	Description	Qty in Set	Part Number
1	Flask	10	70-1157
2	Seal for GC vials - white Viton	▪	70-1359
	Seal for GC vials - perfluoroelastomer	▪	70-1360
	Seal for all vials except GC - white Viton	▪	70-1363
	Seal for all vials except GC - perfluoroelastomer	▪	70-1364
3	Adapter	▪	▪ ▪
4	Cushion for 125 ml SampleGenie - PTFE	8	70-1373
5	Sample Holder:		
	SampleGenie set with white Viton seals	1	70-1346
	SampleGenie set with perfluoroelastomer seals	1	70-1347

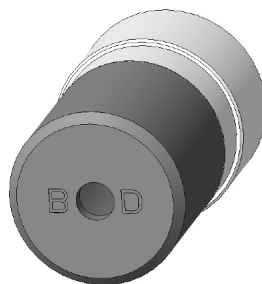
▪ Specify quantity when ordering

▪ ▪ Refer to following table for 125 ml adapter part numbers

Please specify adapter type when ordering complete assemblies.

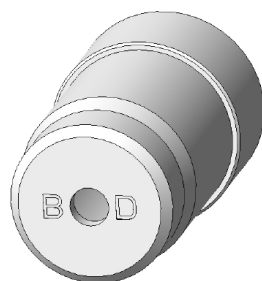
125 ml Drying Adapters

Code	Max. Vial Diameter (mm)	Vial Length (mm)	Part Number
BE	11.8	30.5 to 33.5	04-6216
BC	15.3	43.5 to 46.5	04-6162
BG	15.3	48.5 to 51.5	04-6378
BB	16.8	33.5 to 36.5	04-6161
BM	16.8	43.5 to 46.5	04-6759
BH	17.3	48.5 to 51.5	04-6390
BF	17.3	58.5 to 61.5	04-6292
BL	18.0	43.5 to 46.5	04-6737
BO	18.3	38.5 to 41.5	04-7645
BK	21.8	55.5 to 58.5	04-6606
BJ	23.8	58.5 to 61.5	04-6454
BN	24.3	48.5 to 51.5	04-6979
BA	27.3	58.5 to 61.5	04-6048
BD	28.3	58.5 to 61.5	04-6190



125 ml Lyophilisation/Concentration Adapters

Code	Max. Vial Diameter (mm)	Vial Length (mm)	Part Number
BE	11.8	30.5 to 33.5	04-6217
BC	15.3	43.5 to 46.5	04-6160
BG	15.3	48.5 to 51.5	04-6377
BB	16.8	33.5 to 36.5	04-6159
BM	16.8	43.5 to 46.5	04-6760
BH	17.3	48.5 to 51.5	04-6389
BF	17.3	58.5 to 61.5	04-6293
BL	18.0	43.5 to 46.5	04-6739
BO	18.3	38.5 to 41.5	04-7644
BK	21.8	55.5 to 58.5	04-6605
BJ	23.8	58.5 to 61.5	04-6453
BN	24.3	48.5 to 51.5	04-6980
BA	27.3	58.5 to 61.5	04-6049
BD	28.3	58.5 to 61.5	04-6192



NOTE: Code is shown on the base of the adaptor.

250 ml SampleGenie



Item	Description	Qty in Set	Part Number
1	Flask	4	70-1158
2	Seal for GC vials - white Viton	▪	70-1359
	Seal for GC vials - perfluoroelastomer	▪	70-1360
	Seal for all vials except GC - white Viton	▪	70-1363
	Seal for all vials except GC - perfluoroelastomer	▪	70-1364
3	Adapter	▪	▪ ▪
4	Cushion for 125 ml SampleGenie - PTFE	4	70-1358
5	Sample Holder:		
	SampleGenie set with white Viton seals	1	70-1352
	SampleGenie set with perfluoroelastomer seals	1	70-1353

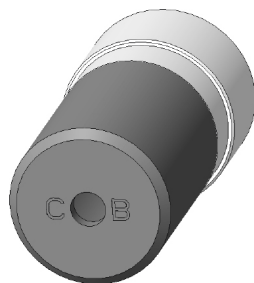
▪ Specify quantity when ordering

▪ ▪ Refer to following table for 250 ml adapter part numbers

Please specify adapter type when ordering complete assemblies.

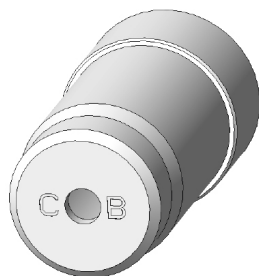
250 ml Drying Adapters

Code	Max. Vial Diameter (mm)	Vial Length (mm)	Part Number
CF	11.8	30.5 to 33.5	04-6218
CE	15.3	43.5 to 46.5	04-6186
CD	17.3	58.5 to 61.5	04-6184
CH	21.3	68.5 to 71.5	04-6363
CC	27.3	58.5 to 61.5	04-6182
CA	27.3	68.5 to 71.5	04-6163
CG	28.3	58.5 to 61.5	04-6238
CB	28.3	68.5 to 71.5	04-6168



250 ml Lyophilisation/Concentration Adapters

Code	Max. Vial Diameter (mm)	Vial Length (mm)	Part Number
CF	11.8	30.5 to 33.5	04-6219
CE	15.3	43.5 to 46.5	04-6172
CD	17.3	58.5 to 61.5	04-6171
CH	21.3	68.5 to 71.5	04-6245
CC	27.3	58.5 to 61.5	04-6170
CA	27.3	68.5 to 71.5	04-6144
CG	28.3	58.5 to 61.5	04-6239
CB	28.3	68.5 to 71.5	04-6169



NOTE: Code is shown on the base of the adaptor.

Miscellaneous

Infinity Trolley


The Infinity Trolley is a modular system designed to accommodate a range of Genevac evaporation equipment. The trolley provides safe and durable support for the evaporator, whilst occupying the minimum amount of laboratory space. The lower “truck” can be extended to provide access to items on the lower shelf.




Approximate Infinity Trolley Dimensions:

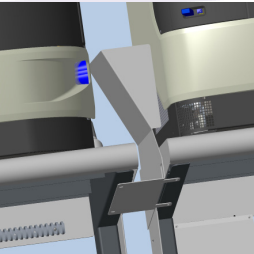
740 mm x 733 mm x 835 mm (W x D x H)

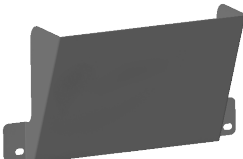
When truck is fully extended, add 500 mm to depth.
For optional side-shelf, add 260 mm to width.

	Infinity Trolley		Part Number
	Description	Infinity Trolley	70-1850
	Details	Compatible with miVac, EZ-2 Series, Rocket Synergy and HT-Series 3 evaporators.	

	Infinity Trolley Accessory		Part Number
	Description	Shelf Kit	70-1635
	Details	Bolts to the back of the Infinity Trolley. May be fitted to left- and right-hand sides.	

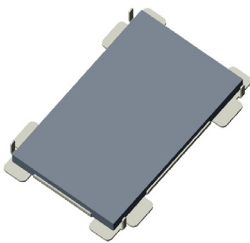
	Infinity Trolley Accessory		Part Number
	Description	Joining Kit	70-1636
	Details	Plate and fixing screws to securely join an Infinity Trolley to another adjacent Trolley. Any number of Infinity Trollies may be joined together, using one joining kit for each Trolley being joined. NOTE: Not suitable for use with HT-Series 3 systems.	

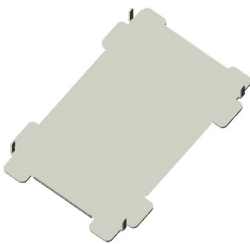
	Infinity Trolley Accessory		Part Number
	Description	HT-Series 3 Deflector Plate & Joining Kit	70-1900
	Details	Designed specifically for the HT-Series 3, this Infinity Trolley joining kit includes a deflector plate to direct exhaust airflow away from the evaporator. NOTE: Suitable for use with HT-Series 3 systems only.	

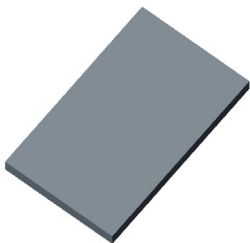
	HT-Series 3 Accessory		Part Number
	Description	HT-Series 3 Deflector Plate	70-2017
	Details	For use with HT-Series 3 evaporators. Directs exhaust airflow away from adjacent evaporators when siting multiple Series 3 systems together on a bench (without Infinity Trollies).	

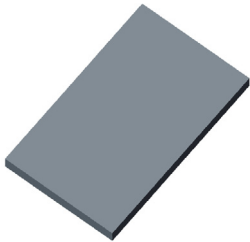
Heat-Transfer Plates for Microplates

Heat-Transfer Plates provide improved evaporation results when using microtitre plates. Heat-Transfer Plates are suitable for use with microtitre plates only.

	Heat-Transfer Plates		Part Number
	Description	HTP - Complete Assembly	70-1786
	Details	Heat-Transfer Plate with pliable thermal pad. Compatible with all types of deep-well plate that fit within the footprint of the fast-stack or side-bridge swing.	

	Heat-Transfer Plates		Part Number
	Description	HTP - Base Plate	70-1787
	Details	Replacement base plate (only) for Heat-Transfer Plate Assembly.	

	Heat-Transfer Plates		Part Number
	Description	HTP - Thermal Pad	70-1788
	Details	Replacement thermal pad (only) for Heat-Transfer Plate Assembly.	

	Heat-Transfer Plates		Part Number
	Description	HTP - Thermal Pad (old style)	70-1614
	Details	Replacement thermal pad (only) for older version Heat-Transfer Plates. NOTE: Suitable for use with older version Heat-Transfer Plates, part number 70-1613, only.	

NOTE: Heat-Transfer Plate assembly 70-1786 is supplied with deep-well fast-stack swings (70-1612), and may also be used with standard side-bridge swings (70-0578).

NOTE: Thermal Pads are a consumable item. They may be turned over, allowing both sides of the pad to be used before replacement.

Highly durable, solid aluminium Heat-Transfer Plates are available to suit a range of microtitre plates. Please contact your local Genevac representative for more details.



NOTE: Solid Heat-Transfer Plates should only be used with the type of microtitre plate for which they were specified.



Gilson and Waters Fraction Collection Racks

Genevac offer a range of innovative options that help interface fraction collection systems directly to a Genevac evaporator. Gilson 215 and Waters 2767 systems are currently supported.

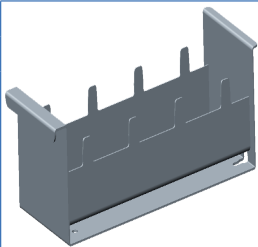
To interface with the fraction collection system, Genevac provide a simple sample holder carrier which fits directly onto the fraction collection bed. Genevac sample holders fit into the carrier to make up a complete fraction collection rack. Once fractions are collected, the sample holders can be placed directly into the Genevac evaporator with no need to label, mark or manipulate individual tubes. Sample holders can be marked to indicate their location within the fraction collection rack.

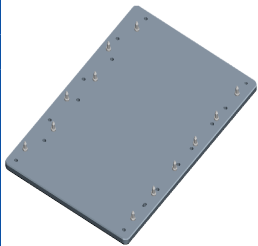
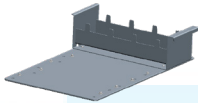
A range of sample holders is available, including standard sample holders and specially-designed holders which ensure uniform spacing between tubes and help reduce fraction collector re-programming.

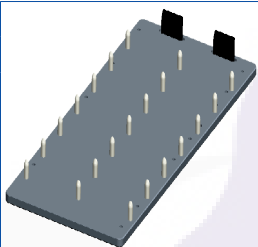
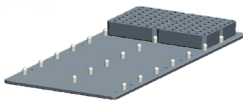
NOTE: Waters 2767 users will require the adapter plate when using 16 mm diameter tubes.

Further information, including a technical article discussing Fraction Collection Racks in greater detail, is available upon request from your local Genevac representative.



	Rack		Part Number
	Description	Rack	10-1570
	Details	<p>For use with Waters Fraction Collection Rack.</p> <p>Holds 4 tube holders (e.g. 10-5020 or 10-5027).</p>	


	Adapter Plate		Part Number
	Description	Adapter Plate for 10-1570	04-4181
	Details	<p>Converts Waters 2767 Sample Manager Rack Bed to hold 3 racks.</p> 	

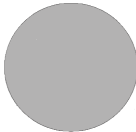
	Adapter Plate		Part Number
	Description	Plate for side-bridge holders	04-4330
	Details	<p>Converts Waters 2767 Sample Manager Rack Bed to hold 14 MAX side-bridge holders.</p> 	


NOTE: The items listed above represent a small sample from the range of fraction collection racks that Genevac can provide. Please contact your local Genevac representative for more details.

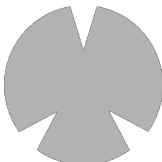
Thermal Cushions

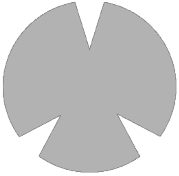
Genevac Thermal Cushions prolong glassware lifetime and dramatically reduce sample drying time. The use of Thermal Cushions is mandatory with some sample holders.

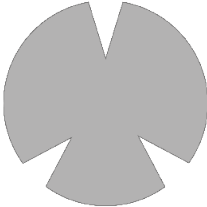
	Thermal Cushion		Part Number
	Diameter	25 mm	10-1564
	Details	Special. Please specify quantity required when ordering. Pack of 100 also available under part number 10-1565.	

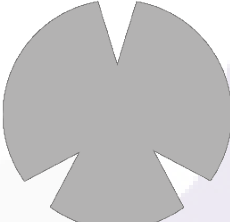
	Thermal Cushion		Part Number
	Diameter	28 mm	10-1546
	Details	For use with flasks or tubes up to 25 ml. Please specify quantity required when ordering. Pack of 100 also available under part number 10-1551.	

	Thermal Cushion		Part Number
	Diameter	33 mm	10-1540
	Details	For use with flasks up to 50 ml. Please specify quantity required when ordering. Pack of 100 also available under part number 10-1556.	

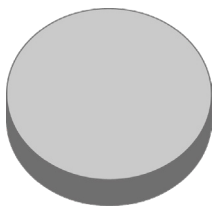
	Thermal Cushion		Part Number
	Diameter	38 mm	10-1542
	Details	For use with flasks up to 170 ml. Please specify quantity required when ordering. Pack of 48 also available under part number 10-1554.	

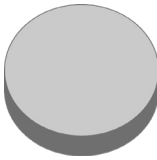
	Thermal Cushion		Part Number
	Diameter	42 mm	10-1541
	Details	For use with flasks up to 100 ml. Please specify quantity required when ordering. Pack of 48 also available under part number 10-1555.	

	Thermal Cushion		Part Number
	Diameter	68 mm	10-1543
	Details	For use with flasks up to 250 ml. Please specify quantity required when ordering. Pack of 12 also available under part number 10-1553.	

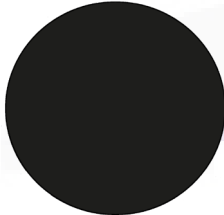
	Thermal Cushion		Part Number
	Diameter	82 mm	10-1544
	Details	For use with flasks up to 500 ml. Please specify quantity required when ordering. Pack of 12 also available under part number 10-1552.	

Tip Cushions


	Tip Cushion		Part Number
	Quantity	Set of 24	70-1371
	Details	For use with sample holder 10-5065.	


	Tip Cushion		Part Number
	Quantity	Set of 24	10-1602
	Details	For use with sample holder 70-1004.	

Viton Cushion

	Viton Thermal Cushion		Part Number
	Diameter	68 mm	04-8963
	Details	For use with sample holders 70-1795 and 10-5060. Please specify quantity required when ordering.	

Thermal Cushion Accessories

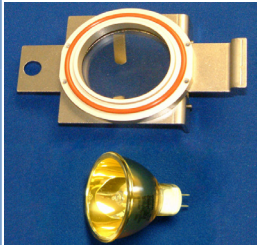
	Accessory		Part Number
	Description	Applicator	04-3822
	Details	For use with thermal cushion.	

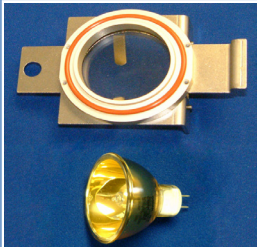
	Accessory		Part Number
	Description	Spatula	04-3869
	Details	For use with thermal cushion.	


Spare Parts


EZ-2 Consumables

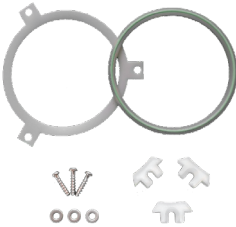
The following parts are compatible with all EZ-2 series evaporators that have a detachable condenser jar.


	Spare Part		Part Number
	Description	Lamp Assembly (non-HCl)	70-1116/S
	Details	<p>For use with EZ-2.2, EZ-2.3 and EZ-2 Elite non-HCl compatible systems only.</p> <p>Lamp assembly consists of: lamp, lamp holder, clear Robax glass and sealing o-rings.</p>	

	Spare Part		Part Number
	Description	Lamp Assembly (HCl)	70-1156/S
	Details	<p>For use with EZ-2.2, EZ-2.3 and EZ-2 Elite HCL-compatible systems only.</p> <p>Lamp assembly consists of: lamp, lamp holder, clear Robax glass and sealing o-rings.</p>	

	Spare Part		Part Number
	Description	Infra-Red Lamp	AC9060
	Details	<p>For use with EZ-2.2, EZ-2.3 and EZ-2 Elite.</p> <p>Lamp only.</p>	

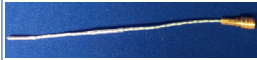
	Spare Part		Part Number
	Description	Lid Seal	04-5094/S
	Details	For use with EZ-2.2, EZ-2.3 and EZ-2 Elite.	


	Spare Part		Part Number
	Description	Jar Seal Kit	70-1494/S
	Details	For use with EZ-2.2 and EZ-2.3. Seal and thread insert kit for condenser jar.	


	Spare Part		Part Number
	Description	Condenser Jar	70-1123/S
	Details	For use with EZ-2.2 and EZ-2.3. Spare condenser jar.	


NOTE: For fitting instructions, please refer to the EZ-2 User Manual.

HT-Series II SampleGuard Probes


	HT-Series II SampleGuard Probes		Part Number
	Length	160 mm	70-0163
	Details	For HT-Series II evaporators. <ul style="list-style-type: none"> SampleGuard Channel 1 to: Solid aluminium rotor; Fast-stack swing; One-piece holder-swing; SampleGenie holder-swing; Sample holder in standard swing; Heat-Transfer Plate in standard swing. 	

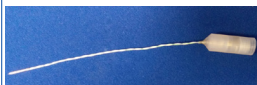
	HT-Series II SampleGuard Probes		Part Number
	Length	220 mm	70-0168
	Details	For HT-Series II evaporators. <ul style="list-style-type: none"> SampleGuard Channel 2 to: Microtitre plate on top-shelf of fast-stack swing; Microtitre plate on Heat-Transfer Plate in standard swing; Aluminium sample holder in a standard swing, where the holder does not protrude through the bottom of the swing. 	


	HT-Series II SampleGuard Probes		Part Number
	Length	280 mm	70-0210
	Details	For HT-Series II evaporators. <ul style="list-style-type: none"> SampleGuard Channel 2 to: Any sample holder in a side-bridge swing; Aluminium sample holder in a standard swing, where the holder protrudes through the bottom of the swing. 	


	HT-Series II SampleGuard Probes		Part Number
	Length	Custom	70-0429
	Details	For HT-Series II evaporators. <p>For custom made probes of any length, please contact sales@genevac.co.uk or contact your local Genevac representative. Please specify the required length when ordering.</p>	

HT-Series II SampleGuard Probes - HCl Compatible


	HT-Series II SampleGuard Probes - HCl Compatible		Part Number
	Length	160 mm	70-0199
	Details	For HT-Series II HCl-compatible evaporators only. SampleGuard Channel 1 to: <ul style="list-style-type: none"> • Solid aluminium rotor; • Fast-stack swing; • One-piece holder-swing; • SampleGenie holder-swing; • Sample holder in standard swing; • Heat-Transfer Plate in standard swing. 	

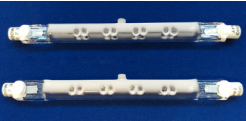
	HT-Series II SampleGuard Probes - HCl Compatible		Part Number
	Length	220 mm	70-0200
	Details	For HT-Series II HCl-compatible evaporators only. SampleGuard Channel 2 to: <ul style="list-style-type: none"> • Microtitre plate on top-shelf of fast-stack swing; • Microtitre plate on Heat-Transfer Plate in standard swing; • Aluminium sample holder in a standard swing, where the holder does not protrude through the bottom of the swing. 	


	HT-Series II SampleGuard Probes - HCl Compatible		Part Number
	Length	280 mm	70-0212
	Details	For HT-Series II HCl-compatible evaporators only. SampleGuard Channel 2 to: <ul style="list-style-type: none"> • Any sample holder in a side-bridge swing; • Aluminium sample holder in a standard swing, where the holder protrudes through the bottom of the swing. 	


	HT-Series II SampleGuard Probes - HCl Compatible		Part Number
	Length	Custom	70-0440
	Details	For HT-Series II HCl-compatible evaporators only. For custom made probes of any length, please contact sales@genevac.co.uk or contact your local Genevac representative. Please specify the required length when ordering.	

HT-Series 3 Consumables

	HT-Series 3 Chamber Door Seal		Part Number
	Dimensions	435 mm x 444 mm (W x H)	70-2050/S
	Details	For HT-Series 3 evaporators.	Replacement chamber door seal for HT-Series 3 evaporators.

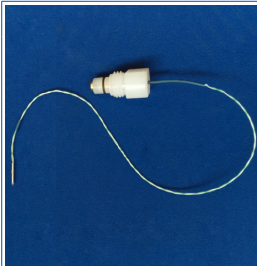
	HT-Series 3 Infra-Red Lamps		Part Number
	Quantity	Set of two.	70-1846/S
	Details	For HT-Series 3 evaporators.	Replacement IR lamps for HT-Series 3 evaporators.

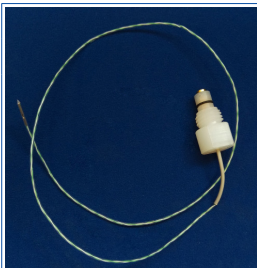
	HT-Series 3 SampleGuard Battery Housing Seal		Part Number
	Quantity	Set of one.	70-1848/S
	Details	For HT-Series 3 evaporators.	Replacement SampleGuard battery housing seal for HT-Series 3 evaporators.

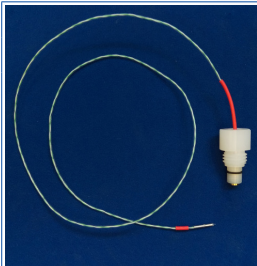
	HT-Series 3 SampleGuard Probe Sealing O-Ring		Part Number
	Quantity	Set of four.	70-1847/S
	Details	For HT-Series 3 evaporators.	Replacement SampleGuard probe sealing o-rings for HT-Series 3 evaporators.

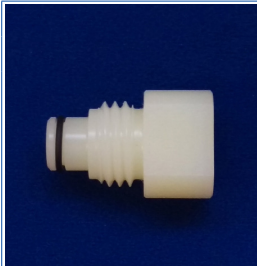
HT-Series 3 SampleGuard Probes

All Series 3 SampleGuard probes are HCl-compatible. Probes are a consumable item.

	HT-Series 3 SampleGuard Probes		Part Number
	Length	445 mm	70-2091/S
	Details	For HT-Series 3 evaporators. Colour: Blue For Rotor position A1 (Control)	

	HT-Series 3 SampleGuard Probes		Part Number
	Length	655 mm	70-2090/S
	Details	For HT-Series 3 evaporators. Colour: Grey For Rotor positions A1 (Auxiliary) and B4 (Control)	

	HT-Series 3 SampleGuard Probes		Part Number
	Length	765 mm	70-2092/S
	Details	For HT-Series 3 evaporators. Colour: Red For Rotor position B4 (Auxiliary)	

	HT-Series 3 SampleGuard Probe Blanking Plug		Part Number
	Quantity		70-1852/S
	Details	For HT-Series 3 evaporators. Replacement SampleGuard Probe Blanking Plug for HT-Series 3 evaporators.	

NOTE: For fitting instructions, please refer to the *HT-Series 3 Installation & Maintenance Manual*.

This page intentionally left blank.



This page intentionally left blank.



This page intentionally left blank.



This page intentionally left blank.



This page intentionally left blank.



Genevac Patents

Genevac products are protected by the following patents and patent applications.

1297873	2332865	1297873 FR	2396575
1153278	2334688	1556149 FR	2363745
1073505 FR	6,605,474	1556149	2332865
699 18 734.6-08	1297874	600 07 636.9-08	2351683
699 18 733.8-08	1383605	4465277	6,878,342
699 09 770.3-08	1556149	1196757 CH	7,252,803
600 07 636.9-08	1196757	2362590	7,503,997
1297874 CH	1153278	1073505 CH	2024048
1297873 CH			



All specifications are subject to change without notice. Coolheat®, VacRamp™, Dri-Pure®, SampleGuard™, SampleGenie™ and associated logos are trade-marks of Genevac Ltd. Unauthorised use is prohibited.

Your local Genevac sales representative will be happy to advise on the availability of special order items in addition to the sample holders included in this brochure.

Genevac Ltd.
The Sovereign Centre
Farthing Road
Ipswich
IP1 5AP
United Kingdom

Tel:

Sales: +44 (0) 1473 240000
Service: +44 (0) 1473 243000
Fax: +44 (0) 1473 461176

Email:

Sales: salesinfo@genevac.co.uk
Service: service@spscientific.com

Application Support: applications@genevac.co.uk

<http://www.spscientific.com>

Genevac Inc.
SP Scientific
3538 Main Street
Stone Ridge
NY12484
United States of America

Tel:

Sales: (1) 845 267 2211
Service: (1) 877 548 4666
Fax: (1) 845 267 2212

Email:

Sales: sales@genevacusa.com
Service: service@spscientific.com

Application Support: applications@genevac.co.uk

<http://www.spscientific.com>